



## Communications Department

FOR IMMEDIATE RELEASE

May 14, 2015

Contact: Wixson Huffstetler  
Director of Parks and Recreation  
870-933-4604  
[whuffstetler@jonesboro.org](mailto:whuffstetler@jonesboro.org)

### **Parking Expansion at Joe Mack Campbell Park**

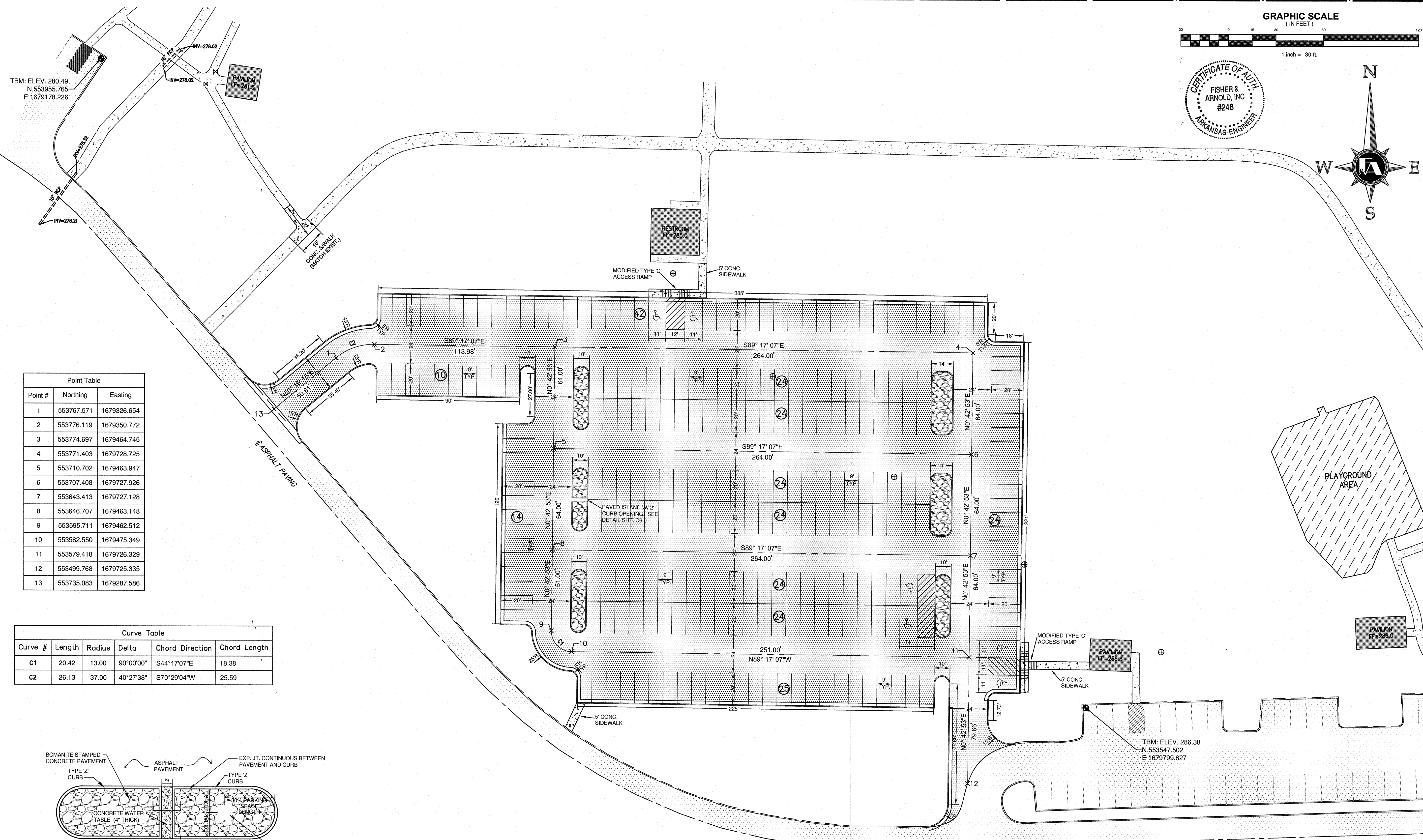
Jonesboro, AR—The City of Jonesboro Parks and Recreation Department is expanding the parking facilities at Joe Mack Campbell Park.

Since the park opened in 2002, more and more people are using the amenities available. More tournaments are being held and recreation programs are expanding. As a result, many weekends find every field being used and the entire park full of children and adults enjoying the park. This has created a need to provide more space to park vehicles. Currently, overflow parking has been on grassy areas that are not designed to manage parking or withstand vehicle traffic. Parking on unpaved surfaces also causes soil erosion, stormwater runoff issues, and safety issues.

The new parking area will be located west of the playground in an area between the soccer fields and the baseball fields. When completed the parking area will accommodate 259 vehicles and include parking for disabled patrons adjacent to one of the park's pavilions, and to restroom facilities. The City plans to complete construction by the end of July, in anticipation of hosting the Cal Ripkin 10-Year Old Youth Baseball World Series in August.

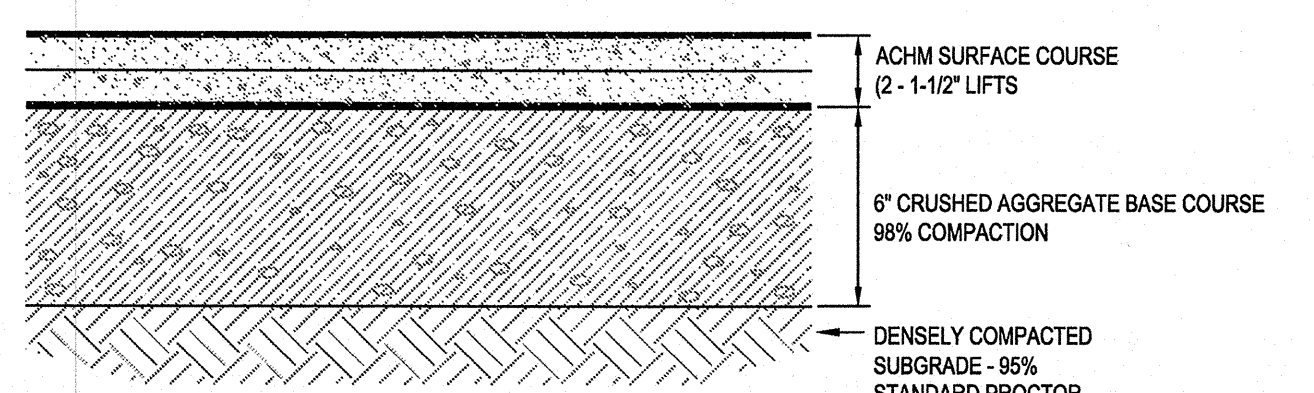
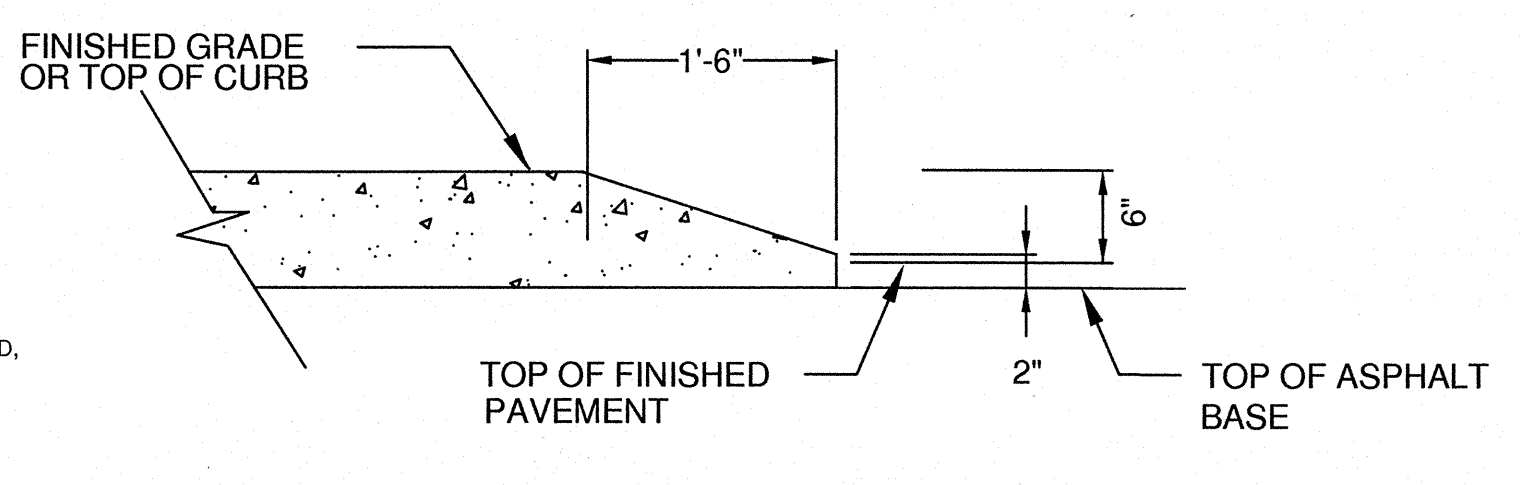
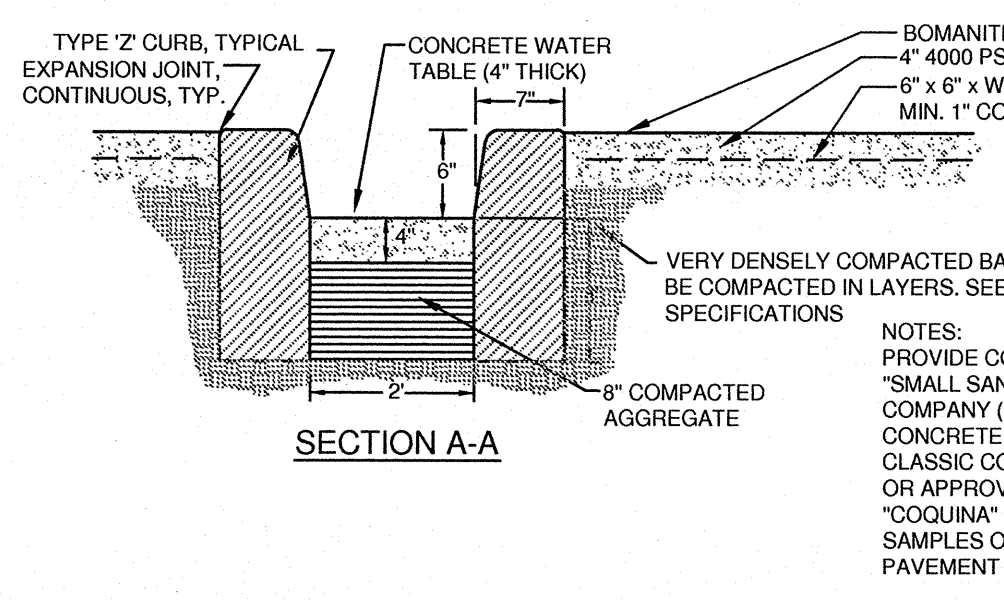
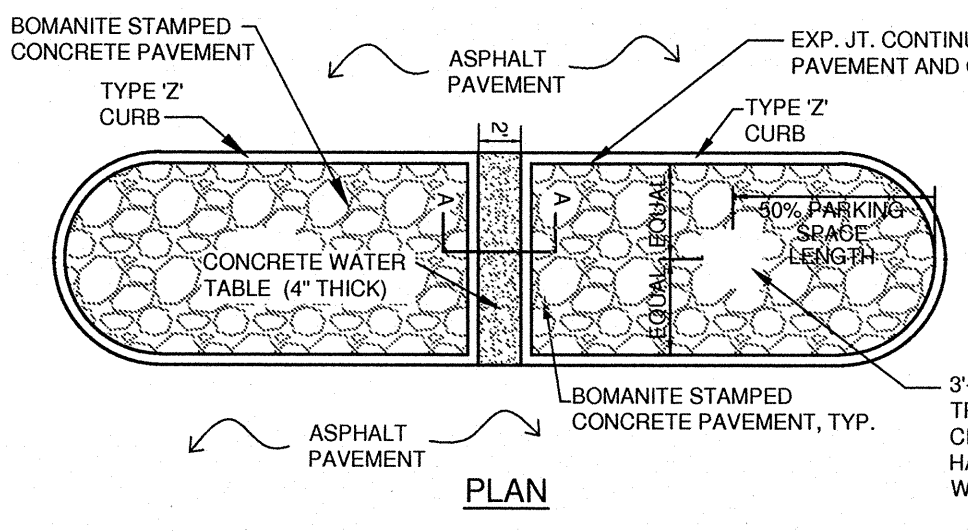
attachments: JMC\_ParkingLotPlanView.pdf

###



Point #	Northing	Easting
1	553767.571	1679326.654
2	553776.119	1679350.772
3	553774.697	1679464.745
4	553771.403	1679728.725
5	553710.702	1679463.947
6	553707.408	1679727.926
7	553643.413	1679727.128
8	553646.707	1679463.148
9	553595.711	1679462.512
10	553582.550	1679475.349
11	553579.418	1679726.329
12	553499.768	1679725.335
13	553735.083	1679287.586

Curve #	Length	Radius	Delta	Chord Direction	Chord Length
C1	20.42	13.00	90°00'00"	S44°17'07"E	18.38
C2	26.13	37.00	40°27'38"	S70°29'04"W	25.59



LEGEND	
EXIST. ASPHALT SURFACE	[Pattern]
PROPOSED ASPHALT PAVING	[Pattern]
EXIST. CONC. SWALK	[Pattern]
PROPOSED CONC. SWALK	[Pattern]
BOMANITE STAMPED CONCRETE	[Pattern]
TYPE 'A' COMBINATION CURB & GUTTER	[Symbol]
PROPOSED TYPE 'Z' CURB	[Symbol]

NOTES:  
 PROVIDE CONCRETE PAVEMENT STAMPED WITH "SMALL SANDSTONE" PATTERN BY THE BOMANITE COMPANY (GRANITE BAY, CA) OR APPROVED EQUAL. CONCRETE SHALL BE FINISHED WITH BOMANITE CLASSIC COLOR HARDENER STAIN IN PARKING ISLAND, OR APPROVED EQUAL. COLOR TO BE "SAND" OR "COQUINA" OR AS SELECTED BY OWNER. PROVIDE SAMPLES OF STAMPED PATTERNED CONCRETE PAVEMENT WITH COLORS FOR APPROVAL.

Copyright 2013 Fisher & Arnold, Inc. All rights reserved.  
 Layout Name: C3.0 Substation Plans (17/2/2013).dwg  
 Plotted: Wednesday, May 08, 2013 - 7:43 am  
 By: Russells

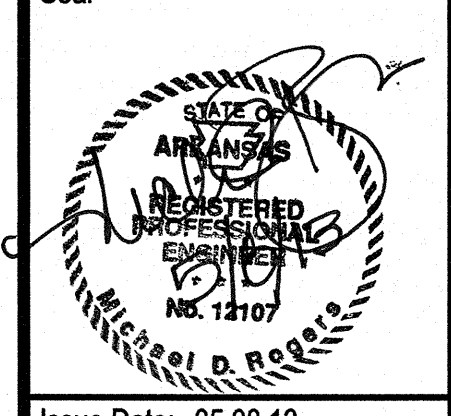
GRAPHIC SCALE  
(IN FEET)  
1 inch = 30 ft.

CERTIFICATE OF AUTHORITY  
FISHER & ARNOLD, INC.  
#248  
ARKANSAS-ENGINEER

**FISHER & ARNOLD, INC.**  
 9180 Crestway Hills Drive • Memphis, Tennessee 38125-6538  
 901-748-1811 • Fax: 901-748-3115 • Web: www.fisherand.com  
 Architects • Engineers • Environmental Consultants • Interior Designers • Landscape Architects • Planners • Surveyors

PARKING ADDITION  
 Joe Mack Campbell Park  
 JONESBORO, ARKANSAS

Rev.	Date	Revision Description



Issue Date: 05.08.13  
 Project No: F8175  
 Drawn By: RS  
 Checked By: MDR  
 Sheet Title:

**SITE LAYOUT PLAN**  
 C3.0  
 SHEET 1 OF 1